

# *State of the City 2009*



*Mayor Norm Boucher*



## *our vision*

Is to be a community of choice.

Working together with the community, this is Council's vision for the City of Medicine Hat. It is a vision that sees a vibrant city with residents, businesses and visitors seeking to make Medicine Hat their "community of choice."

## *our mission*

Is to exceed expectations in the value of our services.

In pursuit of our vision, the City of Medicine Hat is committed to a mission of striving to exceed expectations of our residents, businesses and visitors.

We will achieve this by:

- Providing strong and effective leadership.
- Working together with a unified purpose.

## *our values*

We are committed to the following core values, which we believe enable us to achieve our vision.

- Innovation, creativity and diversity
- Openness, debate and participation
- Performance results
- Being proactive
- Balanced and responsible development
- A long-term perspective
- Well-being of residents and employees
- Principle of self-determination for our community
- Continuous learning and staff development



## *About Medicine Hat*

*With an area of 112 square kilometres and a population of more than 60,000 people, Medicine Hat is definitely not a bedroom community. We boast a self-sufficiency and way of life many agree is second to none.*

### *Our Community*

A Quality of Life survey carried out in 2008 indicated that Hatters feel we have the best people, location and natural resources available.

Resident's response to several open-ended questions that related to what they liked most about living in Medicine Hat (in descending order) was:

1. The small town / small city feel
2. The size
3. The people
4. The city in general
5. Accessibility (convenient to get around)

Safety is also one of Medicine Hat's top priorities and a recent Medicine Hat Police Services survey indicated Hatter's satisfaction with the safety of the city is very high and satisfaction with their encounters, interaction and relationships with the police service and felt comfortable in their handling of crime.

Situated at the crossroads of the Trans Canada Highway 1 and Highway 3 and located 168 kilometres from Lethbridge, 293 kilometres Calgary and 146 kilometres from the United States border, Medicine Hat has easy access to every part of the world.

Medicine Hat has an abundance of sunshine for all to enjoy. Medicine Hat is a warm, friendly and generous community.

### *Our People*

Medicine Hat residents are warm and friendly with an entrepreneurial spirit that has been passed down

through the generations, as indicated by the number of small businesses and home offices located throughout the community.

Our people have an abundance and energy that shows in the vitality of our community. City Council agreed that their main priority remains the well being of our residents by ensuring that appropriate services are delivered in the most cost effective manner and that all residents feel, safe and comfortable in the community and always feel that they are a part of the community. We do this by encouraging all residents to participate in events that will affect them – open houses, surveys, volunteer opportunities and City Council and Standing Committee meetings.

### *Our Location*

Medicine Hat is located in the beautiful Saskatchewan River Valley along with the serenity and majesty of the Saskatchewan River and its coulees and natural landscape.

We have the Rocky Mountains to the West the Cypress Hills to the South and endless miles of open prairie to the East. The highways ease into the rolling topography of the great White North.

We are 146 kilometres (91 miles) from the United States border with access to shopping and entertainment in the warm, friendly atmosphere of Havre, Montana.

Medicine Hat is not a bedroom community. We are self-sufficient and well provided for with many essential services and a strong business and service sector, but close enough to Calgary to access top-notch medical care, and an airport with destinations all across the globe.



### *Our Resources*

Medicine Hat is one of the only cities in the world that owns and manages its own electric and gas utility. Built on a massive natural gas field, Medicine Hat has been providing residents and businesses of the city with natural gas since 1904. In addition, a percentage of the revenue for the utilities is given back to the residents as dividends in the form of some of the lowest utility and property tax rates in the country.

We are provided with clean, safe and abundant drinking water resources courtesy of the meandering South Saskatchewan River.

We have an abundance of sunshine, wind and open prairie, all remarkable features for use in alternative energy solutions. We are exploring solar heating, wind power and an underground water aquifer as a means to heat and cool our homes and commercial and industrial buildings.

### *Our Recreation and Leisure*

We have many superior recreational services and more than 90 kilometres of hiking, walking and biking trails that are maintained year round to enable Hatters to enjoy the beauty and serenity of the area throughout the seasons.

We boast six world class golf courses, three indoor and four outdoor pools, six indoor ice arenas, soccer fields, baseball diamonds, tennis courts with an active tennis club, a skateboard park and a BMX track.

Don't forget about skiing, snowboarding, camping, curling, and tobogganing – all within a few kilometers of the city.

If you enjoy sun, snow, warm or cold, Medicine Hat has something for everyone to enjoy.

### *Our Attractions*

Medicine Hat has an abundance of attractions around the city and events throughout the year for everyone to enjoy.

Among the world-class attractions we boast the Historic Clay District, a turn of the century working potter factory and its one-of-a-kind beehive kilns. Examples of pottery and stoneware are located throughout the facility and available for viewing during tours.

The world's tallest tepee built for the 1988 Calgary Olympics stands alongside Highway 1 overlooking scenic Kin-Coulee Park.

Medicine Hat's historic downtown features a self-guided walking tour, available from the downtown merchants. View the historic gas lamps along the streets and the mix of old and new, historic and modern. From the Duggan House to the Esplanade Arts and Heritage Centre there is an eclectic mix of buildings and structures dating from the early 1900's to the new millennium.

### *Our Events*

Medicine Hat boasts many world class events and competitions each year.

We were home to the 2008 Continental Cup of Curling, 2007 Baseball Canada Cup, and the 2008 Alberta Summer Games.

In addition, we have our regular events that Hatters looks forward to each year: the Spectrum Sunshine Festival, the JazzFest, Canada Day and the Sandfly Festival, the Medicine Hat Exhibition and Stampede, Downtown Midnight Madness, the Chili Cookoff and the Downtown Artisan's Fair.

If that's not enough, you can enjoy a variety of genres of music and entertainment at the Esplanade Arts and Heritage Centre, the Cultural Centre or most evenings and weekends at the local pubs and cafes.

For the sports enthusiasts you can enjoy the Medicine Hat Tiger's hockey games, the Medicine Hat Speedway and Motorplex or hike / bike through the many trails going through the majestic coulees and take in the glorious scenery in the area.



Medicine Hat  
The Gas City

*For more information on statistics  
please contact:*

**Keith Crush**

Business Development Officer

403.529.8373

[keicru@medicinehat.ca](mailto:keicru@medicinehat.ca)

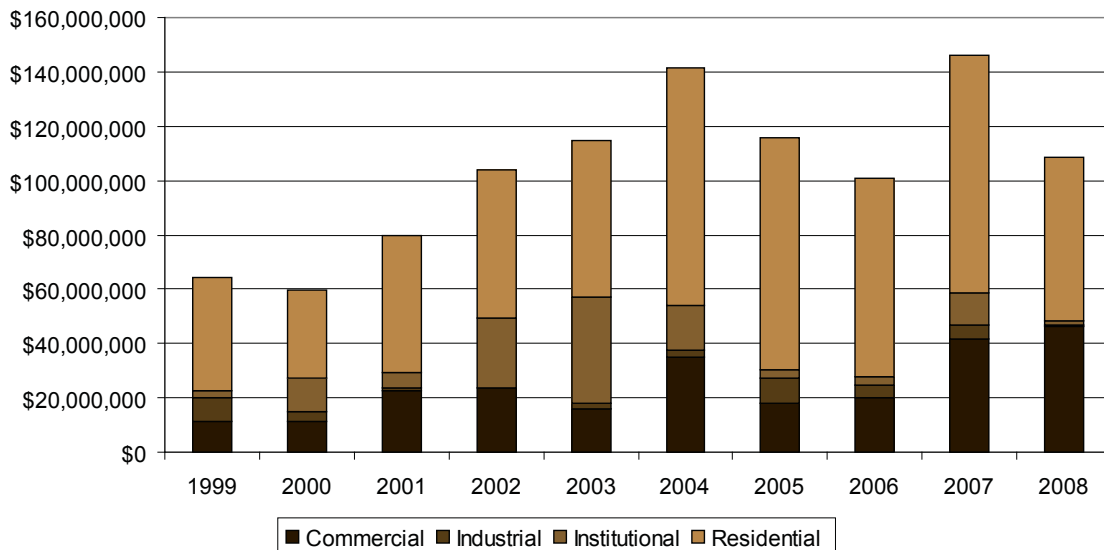
## Business Licenses 2000 – 2008 Combined Home Based and Commercial

	2000	2001	2002	2003	2004	2005	2006	2007	2008
January	34	36	53	34	49	33	46	44	54
February	32	26	34	30	36	31	41	38	38
March	45	34	32	45	45	44	60	46	45
April	37	25	45	45	54	52	57	48	64
May	40	29	37	44	35	55	87	67	49
June	34	32	31	48	42	56	54	64	54
July	40	33	35	30	36	49	27	34	40
August	40	45	31	39	36	57	46	61	29
September	27	20	45	40	45	43	35	41	46
October	42	40	43	29	39	39	31	39	63
November	25	38	31	25	45	30	59	35	38
December	16	18	37	34	34	22	23	27	18
<b>Total</b>	<b>412</b>	<b>376</b>	<b>454</b>	<b>443</b>	<b>496</b>	<b>511</b>	<b>566</b>	<b>543</b>	<b>538</b>

## Medicine Hat Building Permit Value 1999 - 2008

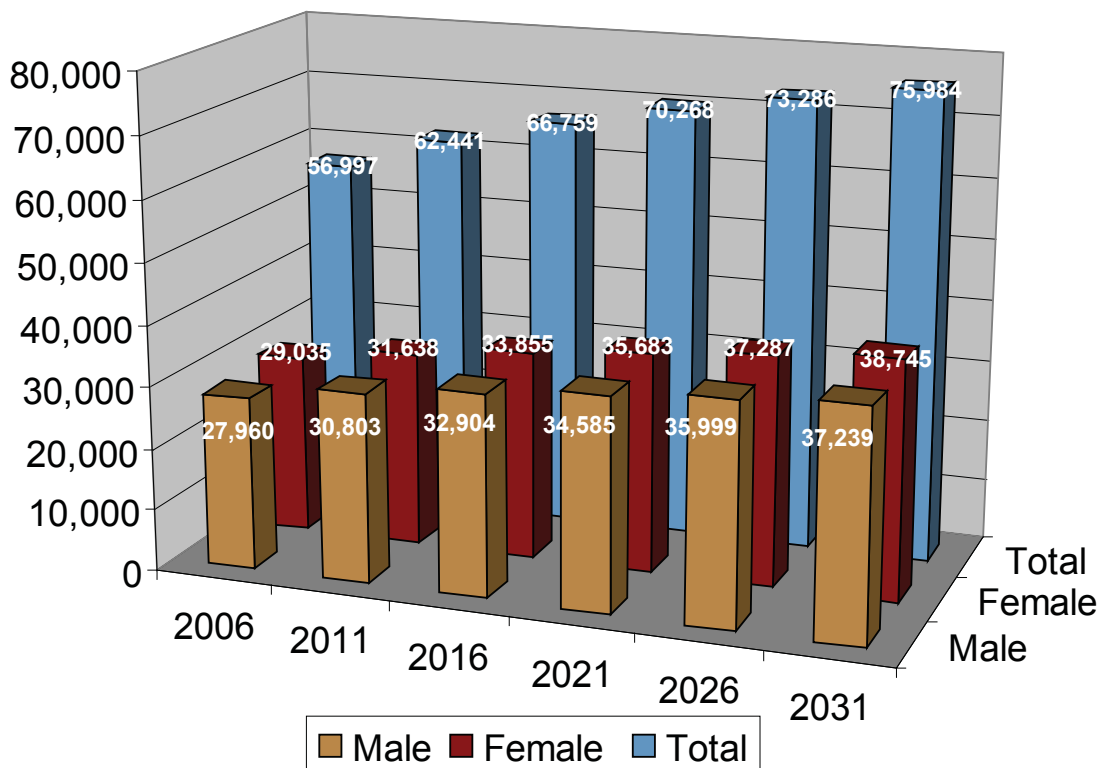
	Commercial	Industrial	Institutional	Residential	Total
<b>1999</b>	\$11,347,000	\$8,528,000	\$2,873,000	\$41,307,000	\$64,055,000
<b>2000</b>	\$11,222,000	\$3,645,000	\$12,314,000	\$32,534,000	\$59,715,000
<b>2001</b>	\$22,893,000	\$998,000	\$5,324,000	\$50,416,000	\$79,631,000
<b>2002</b>	\$23,425,000	\$463,000	\$25,321,000	\$54,584,000	\$103,793,000
<b>2003</b>	\$16,202,000	\$1,577,000	\$39,085,000	\$57,609,100	\$114,473,100
<b>2004</b>	\$34,932,000	\$2,788,000	\$16,179,500	\$87,554,892	\$141,454,392
<b>2005</b>	\$18,140,051	\$9,202,000	\$2,885,000	\$85,374,818	\$115,601,869
<b>2006</b>	\$20,107,500	\$4,528,000	\$3,224,000	\$72,974,000	\$113,543,500
<b>2007</b>	\$41,675,000	\$5,334,000	\$11,810,000	\$87,347,000	\$146,166,000
<b>2008</b>	\$46,398,000	\$357,000	\$1,726,000	\$60,223,000	\$108,704,000

## Medicine Hat Building Permit Value 1999 - 2008



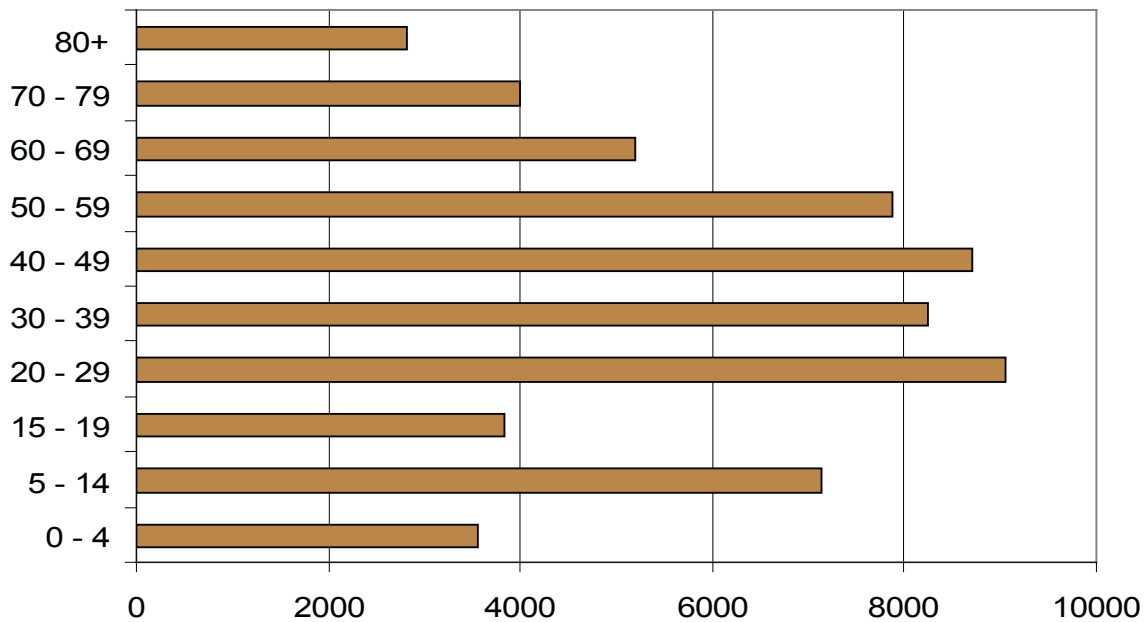
## Medicine Hat Population Projections

	2006	2011	2016	2021	2026	2031
<b>Male</b>	28,431	30,803	32,904	34,585	35,999	37,239
<b>Female</b>	29,149	31,638	33,855	35,683	37,287	38,745
<b>Total</b>	57,580	62,441	66,759	70,268	73,286	75,984





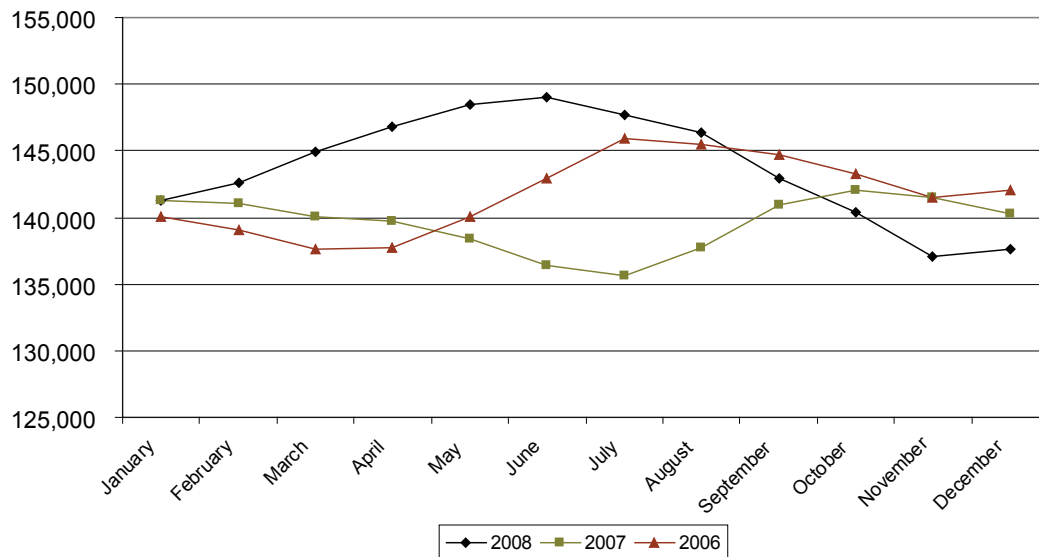
## City of Medicine Hat 2008 Civic Census Population by Age Sectors



All Median Age – 38.6  
Female Median Age – 39.6  
Male Median Age – 37.3

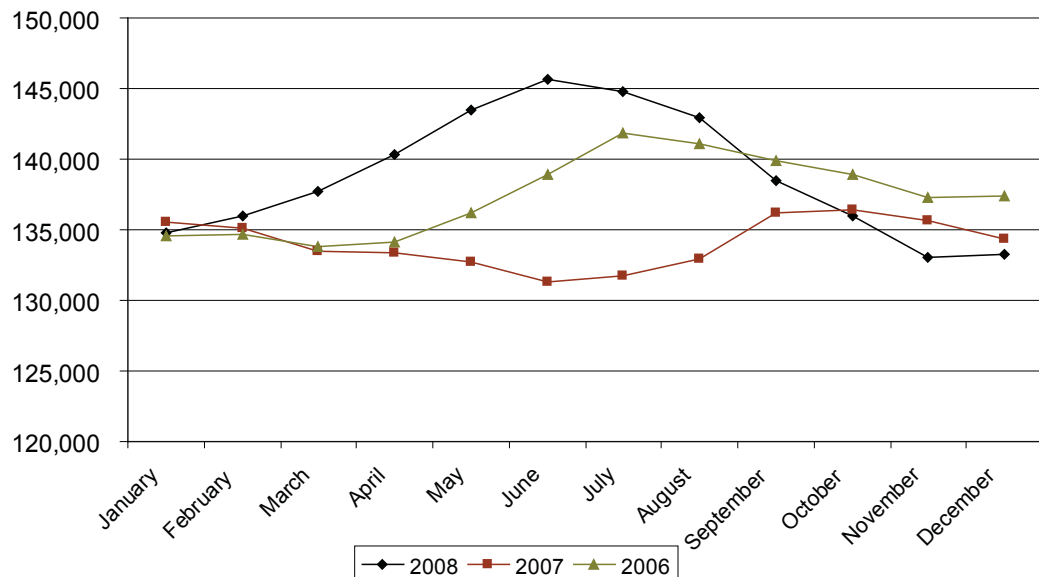
Total Population - 60,426

## Labour Force Comparisons Medicine Hat / Lethbridge Region



Labour Force: Those individuals in the population who are either employed or looking for employment

## Employment Comparisons Medicine Hat / Lethbridge Region

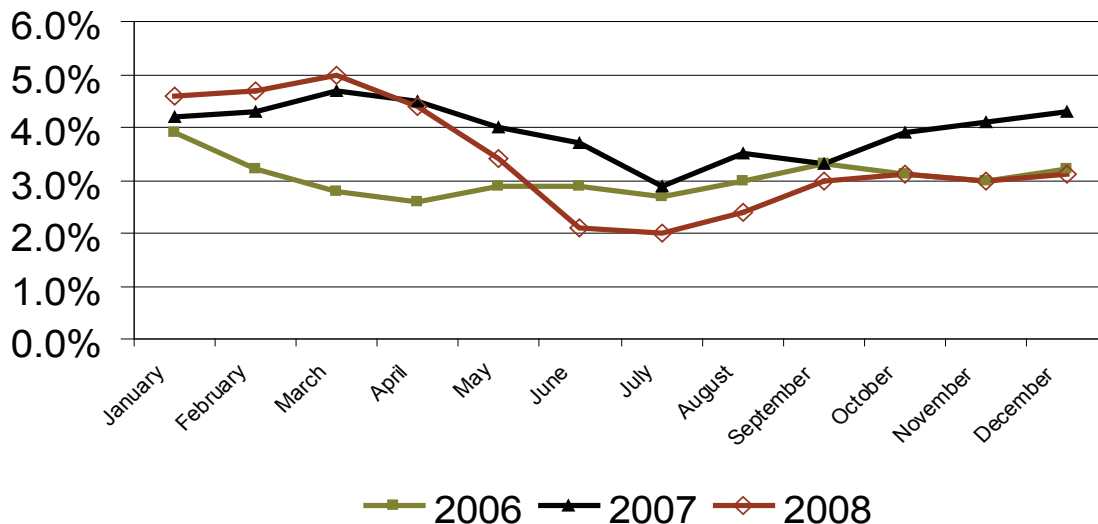


Employed: Any individual who did any work for pay or profit. Includes unpaid family workers in a family farm or business. Includes those on vacation, on strike or on sick leave.

## Medicine Hat Region Unemployment Statistics (Unadjusted)

	2005	2006	2007	2008
January	3.6%	3.9%	4.2%	4.6%
February	4.1%	3.2%	4.3%	4.7%
March	4.2%	2.8%	4.7%	5.0%
April	4.1%	2.6%	4.5%	4.4%
May	3.9%	2.9%	4.0%	3.4%
June	3.9%	2.9%	3.7%	2.1%
July	3.7%	2.7%	2.9%	2.0%
August	3.6%	3.0%	3.5%	2.4%
September	3.5%	3.3%	3.3%	3.0%
October	3.3%	3.1%	3.9%	3.1%
November	3.7%	3.0%	4.1%	3.0%
December	3.9%	3.2%	4.3%	3.1%

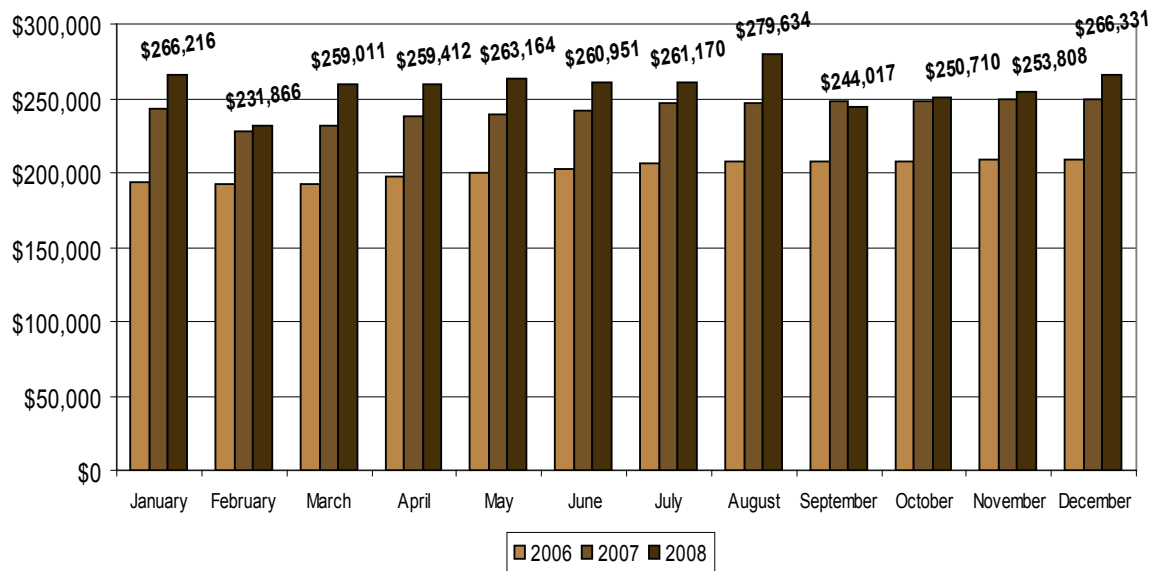
## Medicine Hat Region Unemployment Statistics (Unadjusted)



\* Unemployment Rates for Economic Region 810, which includes Lethbridge and Medicine Hat.



## Medicine Hat - Average House Price



## Medicine Hat Forecast Summary

Medicine Hat Forecast Summary				
	2006	2007	2008f	2009f
<b>New Home Market</b>				
Single-Detached Starts	516	484	425	350
Multi-Family Starts	545	614	250	200
Total Starts	1061	1098	675	550
<b>Resale Market</b>				
Total Sales	1177	1915	1600	1550
Total Average Price	\$202,117	\$249,268	\$261,500	\$265,000
<b>Rental Market</b>				
Apartment Vacancy Rate	1.0 %	1.2 %	4.0 %	3.3 %
Average 2-Bdrm Apartment Rent	\$605	\$630	\$670	\$680
*Source: Medicine Hat Real Estate Board, CMHC, CMHC Forecast Q4				