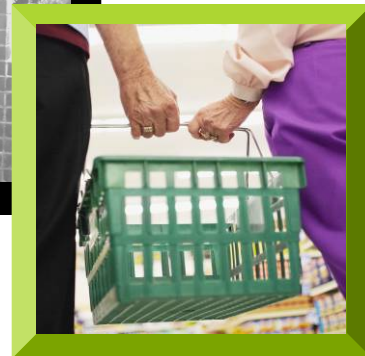
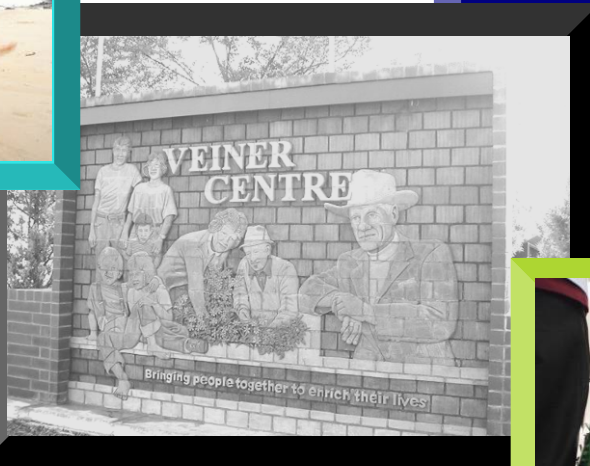


2009 Medicine Hat Seniors Housing Guide



**Veiner
Centre**

225 Woodman Avenue SE
Medicine Hat, AB T1A 3H2
www.medicinehat.ca/veiner

phone: 403-529-8383
fax: 403-529-8382
email: veiner@medicinehat.ca

**Strathcona
Centre**

1150 5th Street SE
Medicine Hat, AB T1A 8C7

phone 403-529-8307
fax 403-529-8369

We all hope to enjoy our independence as long as possible. Whether or not owning and maintaining your own home is an option for you, there are resources that will support you in living as independently as possible.

Senior Services has compiled this housing guide to assist seniors in Medicine Hat in finding the right accommodations to suit their lifestyles. All housing facilities listed are in Medicine Hat, unless otherwise specified. However, please note that growth and development in the housing sector occurs rapidly, and so this information changes frequently.

Contents

Section	Page
1. Ownership or Life Lease	3
2. Rentals	5
3. Subsidized Rentals	6
4. Continuing Care Services	7
4.1 Home Living Stream	8
4.2 Supportive Living Stream	9
4.3 Facility Living Stream	12
5. Alberta Health Services—Senior Services	14
6. Emergency or Transition Housing	15
7. Reminders When Moving	16
8. Contacts and Resources	17

1. Ownership or Life Lease: Condominiums

Description:

There are typically three options when considering a condominium.

- 1) Purchase – similar to buying a house
- 2) Life-lease – guaranteed price for buy back by the lease holder, minus a percentage for depreciation
- 3) Rental units – see next page

In addition to mortgage/lease payments there are fees to cover the care and maintenance of the facilities for example: lounges and parking.

Facility List:

Chinook Village

(Life Lease) 50+

2801 13th Avenue SE T1A 3R1

www.chinookvillage.com

Contact: Alvin Kurpjuweit

phone: 403-526-6951

email: info@chinookvillage.com

The Courtyards

(Apartment Style) 40+

278 Park Meadows Drive SE

T1B 4J1

phone: 403-526-6656

Grandview Village

(Apartment Style) 40+

#2–1535 Southview Drive SE

T1B 4H8

phone: 403-528-8803

Meadowlark Village

(Modular Home Park—Purchase and Site Lease) 35+

1600 Strachan Road T1B 4M3

phone: 403-504-5499

The Moose Family Center

(Apartment Style) 50+

2800 13th Avenue SE

phone: 403-527-3227

Norwood Grande

(Apartment Style – single and two bedroom) 50+

2801 13th Avenue SE T1A 3R1

phone: 403-526-6951

Park Meadows Estates

(Single home, duplex, triplex) 50+

1 Park Meadows Lane SE T1B 4E3

phone: 403-528-4191

Facility list continued on next page.

1. Ownership or Life Lease: Condominiums

Facility List, continued:

Park Meadows Village

(Apartment Style) 50+
22 Park Meadows Drive SE
T1B 4E8
phone: 403-528-4191

Southview Grand

(Apartment Style– Life-Lease) 40+
#100—3021 13th Avenue SE
T1B 4E2
phone: 403-528-9300

South Country Village

Garden Estates

(Apartment Style- Life-Lease) 50+
1720 Bell Street SW T1A 5G1
phone: 403-526-2002

2. Rentals: Seniors Apartments

Description:

These rental facilities can offer a wide range of services. Each facility offers unique services which may include: adult-only accommodations, exercise rooms, lounges, beauty shops or pools. Some may offer meals in a shared dining room for an extra fee.

Facility List:

Chinook Village

2801 – 13th Avenue SE T1A 3R1

www.chinookvillage.com

phone: 403-526-6951

email: info@chinookvillage.com

Corbitt Arms

A0005 66 Corbitt Way SE

T1B 1V3

www.rentmidwest.com

phone: 403-526-7255

Cypress View Foundation

722 Bassett Crescent NW T1A

7W8

www.cypressview.org

phone: 403-527-8755

Mayfair Manor

407 5th Avenue SE T1A 8C2

www.transglobe.com

phone: 403-528-4707

South Country Village

Garden Apartments

1720 Bell Street SW T1A 5G1

phone: 403-526-2002

The Valleyview

65 Valleyview Drive SW T1A 7K5

www.agecare.ca

phone: 403-526-7000

Westview Apartments

727 5th Street SW T1A 4H7

phone: 526-5370

3. Subsidized Rentals: Medicine Hat Community Housing Society

Description:

The Social Housing Department of Medicine Hat Community Housing Society (MHCHS) subsidizes rent for specified housing facilities. Rent is determined by adding all income for the household and then calculating 30% of total income, which is the amount of rent to be paid. Each facility has a MHCHS Project Manager (P.M.) who can provide additional information about a specific property. For all MHCHS information, contact:

Medicine Hat Community Housing Society

#104—516 3rd Street SE
Medicine Hat, AB T1A 0H3

phone: 403-527-4507
fax: 403-526-3163

www.mhchs.ca

Facility List:

Legion Manor (30 Units)

304 2nd Street SE T1A 0C1
phone: 403-526-8436
MHCHS P.M.: Sharon Frame
P.M. phone: 403-527-4507 ext. 105

Luther Manor (52 Units)

#110—922 2nd Street SE T1A 7X2
MHCHS P.M.: Joyce Widmer
P.M. phone: 403-526-0758

Primrose Villa (30 Units)

316 Primrose Drive SE T1B 3S9
MHCHS P.M.: Sharon Frame
P.M. phone: 403-527-4507 ext. 105

Southview Manor (20 Units)

40 Cairns Way SE T1B 1M4
MHCHS P.M.: Sharon Frame
P.M. phone: 403-527-4507 ext.105

Maranatha Villa (32 Units)

#103—355 8th Street SE T1A 1L6
MHCHS P.M.: Sharon Frame
P.M. phone: 403-527-4507 ext.105

Parkside Manor (52 Units)

940 2nd Street SE T1A 8A8
MHCHS P.M.: Joyce Widmer
P.M. phone: 403-526-0758

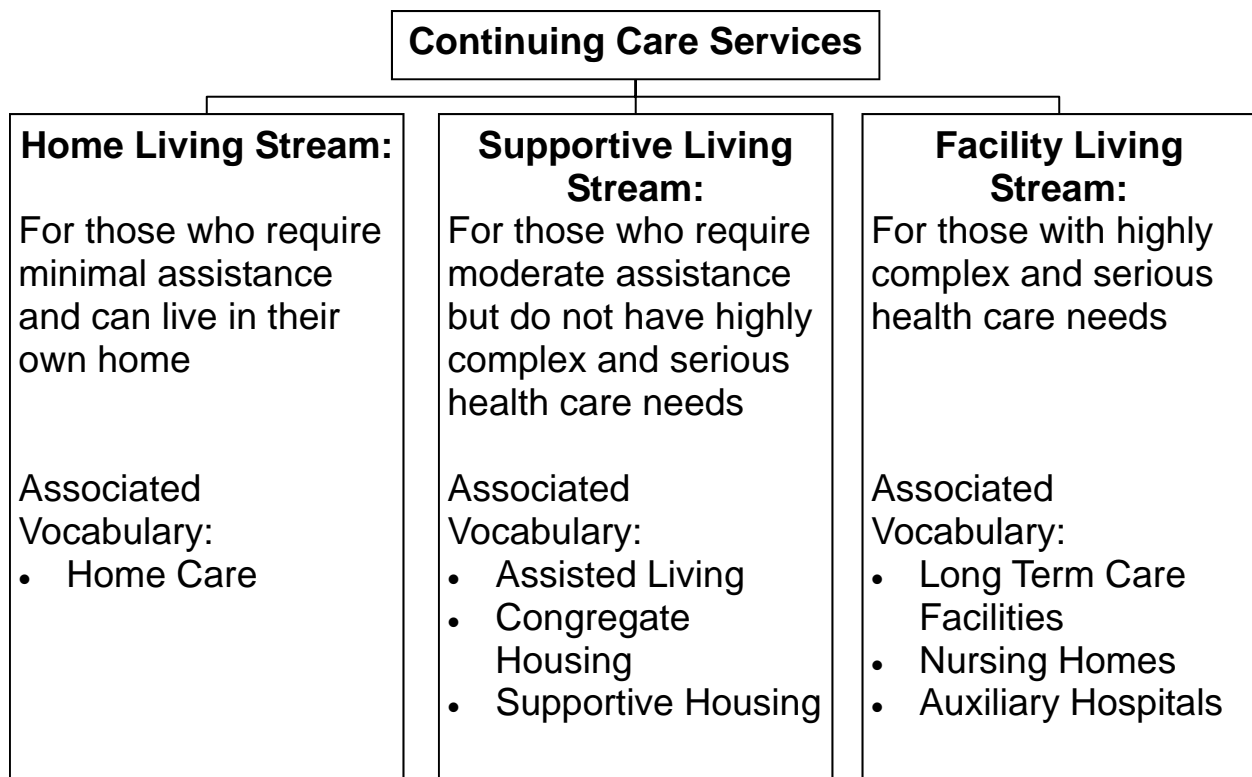
Redcliff Memorial Legion Manor (12 Units)

205 Main Street
Redcliff, AB T0J 2P0
MHCHS P.M.: Sharon Frame
P.M. phone: 403-527-4507 ext. 105

4. Continuing Care Services

Alberta's continuing care system provides health care, personal care and accommodation services in order to support individuals in living as independently as possible.

The system is basically composed of three categories of service (streams) based on a client's level of independence, and the level of assistance required. Each of these streams is introduced below and explained in more detail in the following sections.



In addition, Alberta Seniors and Community Supports provides more information about continuing care, including standards of care and other related documents. For more information visit their website at:

<http://www.seniors.gov.ab.ca/housing/continuingcare/index.asp>

or phone the Alberta Seniors Information Line at 1-800-642-3853.

4.1 Continuing Care: Home Living Stream

Description:

- Home Living is for people who live in their own home, apartment, condominium or in another independent living option. They are responsible for arranging any home care and support services they require.
- Home care can provide in-home professional support services like nursing, physical therapy, occupational therapy and social work. Personal support services like homemaking, bathing or grooming assistance are also available.
- Home care services are provided to individuals of all ages. Any individual, with a demonstrated need, is eligible to receive home care services. The cost of home care services are covered or subsidized based on the patient's demonstrated need.

Regional Home Care Services Contact Info:

phone: 403-581-5750
fax: 403-581-5752

Additional roles of home care:

- Home care programs are also responsible for assessment for continuing care, and they also administer the Alberta Aids to Daily Living program for the authorization of equipment and supplies, based on assessed need.

4.2 Continuing Care: Supportive Living Stream

Description:

- Supportive living combines accommodation services and other supports. Supportive living is for those who require moderate assistance, but not for those with complex needs or those who require 24-hour care by a registered nurse.
- Facilities in the supportive living stream may be called Senior Lodges, Assisted Living, Congregate Housing, Supportive Housing, or may use other names.

Services Available:

- In addition to providing a place to live, accommodation services in supportive living facilities can include meals, housekeeping and social activities. Some have additional facilities available like exercise rooms, lounges, beauty shops, pools, rooms for guests, etc.
- Supportive living residents can also receive professional support services (nursing, physical therapy, occupational therapy and social work) and personal support services (homemaking, bathing or grooming assistance) through home care.
- Usually, home care services will be arranged through the supportive living facility, as opposed to the Home Living Stream, where individuals arrange for their own support services.
- Some people choose to supplement home care services with private agency care.
- Access to supportive living facilities is arranged directly with the facility.

Additional Information:

- Some facilities are secure facilities, or include secure units. This means that all or part of the facility has secure doors and tracking systems so that persons afflicted by dementia cannot leave the unit or facility without the staff being alerted.
- Respite care is available at some supportive living facilities. Subsidized respite is available through Long Term Care (see the Facility Living Stream). Please contact Client Placement/Coordinated Access Services at 403-529-8084 for more information about subsidized respite.

4.2 Continuing Care: Supportive Living Stream

- Those facilities with [^] have secure units available. Contact individual facilities for more information about secure units.
- Those facilities with ^{*} have Designated Assisted Living. Information about Designated Assisted Living is available from Home Care at 403-581-5750

Facility List:

The Champion Center Inc. [^]
(Permanent long term housing with some supports and mandatory medication administration. Centre has 6 rooms – private or semi-private.) 18+
#209—1865 Dunmore Road SE
T1A 1Z8 (Office Address)
<http://www.thechampionscentre.ca/>
phone: 403-504-0342
email: mhchamps@telus.net

Chinook Village ^{*}
2801 13th Avenue SE T1A 3R1
www.chinookvillage.com
phone: 403-526-6951
email: info@chinookvillage.com

Good Samaritan Society: South Ridge Village ^{*} [^]
(Private Rooms)
550 Spruce Way SE T1B 4P1
www.gss.org
phone: 403-528-5051

Leisure Way Community Group Home ^{*} [^]
Box 547 T1A 7G5
phone: 403-526-2536

Masterpiece [^]
(Private Rooms)
#4 River Ridge Drive NW T1A 8V1
www.masterpieceretirement.com
phone: 403-526-8338

Meadowlands Retirement Residence ^{*} [^]
(Respite Beds, Home Care and Private Care Packages, Unfunded Continuing Care)
223 Park Meadows Drive SE
T1B 4K7
www.reveraliving.com
phone: 403-504-5123
email: meadowlands@cplodges.com

Facility list continued on next page.

4.2 Continuing Care: Supportive Living Stream

- Those facilities with [^] have secure units available. Contact individual facilities for more information about secure units.
- Those facilities with ^{*} have Designated Assisted Living. Information about Designated Assisted Living is available from Home Care at 403-581-5750

Facility list continued:

Riverview Care Centre

(Private Rooms)

603 Prospect Dr SW T1A 4C2

phone: (403) 526-7000

The Valleyview ^{*}

(Private Rooms)

65 Valleyview Drive SW T1A 7K5

phone: 403-526-7000

South Country Village: ^{*}

Sunnyside (Semi- and Private Rooms)

Sunnyview [^] (Private Rooms)

1720 Bell Street SW T1A 5G1

phone: 403-526-2002

The Wellington

1595 Southview Drive SE

T1B 0A1

phone: 403-526-2225

Website:

http://www.thewellingtonmh.com/resource_centre.htm

4.3 Continuing Care: Facility Living Stream

Description:

- Facility living provides care for people with complex health needs who are unable to remain at home or in supportive living. The facility living stream gives patients access to care by registered nurses 24/7.
- People in the facility living stream live in long-term care settings, which may be called nursing homes, auxiliary hospitals, or may use other names.

Services Available:

- Long-term care settings provide accommodation services, personal services and health services. Services provided in Long Term Care facilities include, but are not limited to, nursing care, personal care, therapy services, palliative care, pharmacy services, nutritional services, housekeeping, facility maintenance, recreational and social activities.
- The accommodation services in long-term care facilities are provided by the facility and funded by an accommodation fee paid by residents.
- Health services in long-term care settings are publicly funded and provided through Alberta's regional health authorities (as opposed to the home living and supportive living streams where health services are provided by home care).

Additional Information:

- As with the supportive living stream, some long-term care facilities are secure facilities, or include secure units.
- Subsidized respite care is also available through the facility living stream at some long-term care facilities. Please contact Client Placement/Coordinated Access Services at 403-529-8084 for more information about subsidized respite care.

4.3 Continuing Care: Facility Living Stream

Access to Long-Term Care Facilities:

- Entry into long-term care facilities is approved through a Placement Coordinator with Client Placement/Coordinated Access Services. Individuals requiring this level of care have complex health needs and require ongoing and continuous nursing care.
- Coordinated Access works with families to decide how best to provide the appropriate services and appropriate level of care. At times, it may be necessary to temporarily place residents in long-term care facilities other than their first choice.
- Contact Medicine Hat Client Placement/Coordinated Access Services at 403-529-8084.

Facility List:

Good Samaritan Society: South Ridge Village

550 Spruce Way SE T1B 4T1

www.gss.org

phone: 403-528-5050

Leisure Way Community Group Home

Box 547 T1A 7G5

phone: 403-526-2536

Masterpiece

#4 River Ridge Drive NW T1A 8V1

www.masterpieceretirement.com

phone: 403-526-8338

Riverview Care Centre

603 Prospect Drive SW T1A 4C2

phone: 403-527-5531

**South Country Village:
Sunnyside**

1720 Bell Street SW T1A 5G1

phone: 403-526-2002

The Valleyview

65 Valleyview Drive SW T1A 7K5

www.agecare.ca

phone: 403-526-7000

5. Alberta Health Services—Senior Services

Description:

- The Senior Services division of Alberta Health Services (AHS) is the former Geriatric Services division of Palliser Health Region.
- AHS Senior Services can help seniors when their health and well-being is at risk in their current living situation. AHS Senior Services will assess medical needs, helping seniors determine what living situations may provide an appropriate level of care.
- AHS Senior Services consists of one inpatient unit (for those admitted to the hospital) - the Adult Rehabilitation and Geriatric Assessment Unit, and three outpatient areas (for those not admitted to the hospital)- the Geriatrician's Clinic, the Community Outreach Team, and the Day Hospital. The Geriatricians Clinic is the point of access to the other outpatient areas, and a starting point for care with AHS Senior Services.

Outpatient Areas:

- **The Geriatrician's Clinic** accepts patients by physician referral for problems related to the aging process. All patients are seen by one of the three geriatricians for assessment and recommendation.
- **The Community Outreach Team** accepts patients by referral from one of the geriatricians for assessment, recommendation and short term follow-up. Patients are seen in their home by one of the team members (nursing, occupational therapy, physiotherapy, dietitian, or social work) dependent on what the referral is for.
- **The Day Hospital** accepts clients by referral from one of the geriatricians, for attendance at the Day Hospital located in the Medicine Hat Regional Hospital – Regional Resource Centre. Clients receive assessment, and ongoing therapy dependent on the diagnosis. The team consists of Nursing and an Activity Convenor. Clients are assessed individually to determine how long they should participate in the program, for optimal outcome.

Contact Info:

- Contact Alberta Health Services—Senior Services at 403-529-8919.
- Home Care can assist you in the process seeking care with AHS Senior Services. Contact Regional Home Care Services at 403-581-5750.

6. Emergency or Transition Housing

Description:

These facilities provide temporary housing to people whose safety and well-being is at risk in their current living situation.

Facility List:

Medicine Hat Women's Shelter Society

(For women with or without children in abusive situations, and women in crisis situations. Houses up to 18 people)

phone: 403-559-1091 (24 hours)
or 1-800-661-7949

Website: www.mhwss.ca

Medicine Hat Community Housing Society

#104—516 3rd Street SE
T1A 0H3

phone: 403-527-4507

fax: 403-526-3163

Website: mhchs.ca

Salvation Army Family Care Centre

797 8th Street SE T1A 1M6

phone: 403-526-9699

Winters Inn Adult Shelter

(Provides winter emergency response shelter services for homeless adults. Up to 20 mats available) 18+

750 Kingsway Ave. SE T1A 2X4

phone: 403-488-0679

7. Reminders When Moving

Are you moving or has your address changed? Here are some organizations to contact about your new address:

Human Resources Development Canada

(for income security programs, Canada Pension Plan & Old Age Security)

Box 2710 Station Main
Edmonton, AB T5J 4C2
phone: 1-800-277-9914

Alberta Seniors Benefits

#203 –346 3rd Street SE
Medicine Hat, AB T1A 0G7
phone: 403- 529-3156

Canada Post

(for postal redirection)

Memberships or associations

Service providers for phone, television, internet

Magazine, book, music or video clubs

Motor vehicle registry

(for vehicle registration & driver's license)

Canada Customs and Revenue Agency

(for income tax returns, GST rebates)

Room 136, 220 4th Avenue SE
Calgary, AB T2G 0L1
phone: 1-800-959-8281
fax: 403-691-6676

Alberta Health and Wellness

Box 1360 Station Main
Edmonton, AB T5J 2N3
phone: 780-427-1432

Insurance companies

banks

Credit card company

City utilities

Private pension plans